

THE US DEPARTMENT OF AGRICULTURE

The possibilities of partnership



WHAT IS THE ROLE OF THE DEPARTMENT OF AGRICULTURE?

- Mission and Vision. U.S. Department of Agriculture (USDA) provides leadership on food, agriculture, natural resources, rural development, nutrition, and related issues based on sound public policy, the best available science, and efficient management.

<https://www.usda.gov/>



Wildfires

Our thoughts are with local communities and our employees who are facing unprecedented devastation.



Farmers.gov

Find USDA services and resources for farmers, ranchers and producers.



Choose MyPlate

Find real-life solutions for a healthy eating style. MyPlate has resources to help you!



Census of Agriculture

Farmers and Ranchers, this is your opportunity to help shape the future of agriculture by being counted.

WHAT IS THE ROLE OF THE DEPARTMENT OF AGRICULTURE?

- The USDA's vision is to expand economic opportunity through innovation, helping rural America to thrive; to promote agriculture production sustainability that better nourishes Americans while also helping feed others throughout the world; and to preserve and conserve our Nation's natural resources through restored forests, improved watersheds, and healthy private working lands.



Pandemic Assistance

Help for farmers, ranchers and producers impacted by COVID-19 market disruptions.



Have a Question? AskUSDA

Help is available via phone or live chat Monday to Friday from 8am – 8pm EST.



Loans and Grants

USDA provides opportunities to individuals and communities.



Disaster Resources

Learn how to prepare, recover, and help build long-term resilience.

DEPARTMENTS WITHIN THE DEPARTMENT OF AGRICULTURE

- **[Agricultural Marketing Service \(AMS\)](#)**
 - AMS facilitates the strategic marketing of agricultural products in domestic and international markets while ensuring fair trading practices and promoting a competitive and efficient marketplace. AMS constantly works to develop new marketing services to increase customer satisfaction.
- **[Agricultural Research Service \(ARS\)](#)**
 - ARS is USDA's principal in-house research agency. ARS leads America towards a better future through agricultural research and information.
- **[Animal and Plant Health Inspection Service \(APHIS\)](#)**
 - APHIS provides leadership in ensuring the health and care of animals and plants. The agency improves agricultural productivity and competitiveness and contributes to the national economy and the public health.
- **[Economic Research Service \(ERS\)](#)**
 - ERS is USDA's principal social science research agency. Each year, ERS communicates research results and socioeconomic indicators via briefings, analyses for policymakers and their staffs, market analysis updates, and major reports.



National Programs

Office of Scientific Quality
Review

Office of International
Research Engagement and
Cooperation

Search for an ARS project

Search for an ARS scientific
manuscript

Subject of Investigation

[Agave](#)

[Air](#)

[Alfalfa](#)

[Almond](#)

[Animal research, general](#)

[Apple](#)

[Apricot](#)

[Aquatic plants](#)

[Arboreta and botanical gardens](#)

[Atmosphere, general/other](#)

[Bacteria](#)

[Banana](#)

[Barley](#)

[Beans \(dry\)](#)

[Beans \(fresh, fresh-processed\)](#)

[Bedding/garden plants](#)

[Beef cattle, general/other](#)

[Beef cattle, live animal](#)

[Bees, honey, and other pollinators, general](#)

[Berries and cane fruits, other](#)

[Biological Cell Systems](#)

[Blueberry](#)

[Broadleaf forests of the South](#)

[Canola](#)

[Carrot](#)

Research Project: Accelerating the Development, Evaluation, and Adoption of New Apple Rootstock Technologies to Improve Apple Growers Profitability and Sustainability

Location: [Physiology and Pathology of Tree Fruits Research](#)

Project Number: 2094-21220-002-012-R

Project Type: Reimbursable Cooperative Agreement

Start Date: Oct 1, 2016

End Date: May 31, 2022

Objective:

National and international rootstock breeding programs are developing new rootstock genotypes with novel traits that have the potential to increase the sustainability and profitability of the U.S. industry. There is a well-established national breeding program that is developing new apple rootstocks jointly run by USDA-ARS and Cornell University at Geneva, NY. Any newly developed rootstock must be evaluated for a range of characteristics and in a range of climates to fully understand its advantages and weaknesses. To accelerate future rootstock development and to understand the capabilities of current rootstock there is a strong need to understand the physiological and genetic basis of new rootstock performance and the potential interactions with scion cultivars. In modern orchards rootstocks need to interact are subjected to with numerous biotic and abiotic stresses in the orchard including (rhizospheric pathogens, climate change, water availability, soil pH and fertility) which end up affecting not only tree productivity, but also

<https://www.ars.usda.gov/research/projects/?slicetype=keyword>

AGRICULTURE RESEARCH SERVICE



archive



October 25, 2021 [ARS, NASA Join Forces To Monitor Earth's Water Supply](#)
September 21, 2021 [ARS Scientist Highlights Till vs. No-Till Farming](#)
August 19, 2021 [Adapting Corn to Ever Changing Climate](#)
July 22, 2021 [Helping Southeast U.S. Coastal Producers Identify, Mitigate, and Adapt to Increasing Soil Salinization](#)
June 24, 2021 [Alfalfa: A Winner for Producers and the Environment](#)
May 11, 2021 [ARS Citrus Rootstocks: A Success Story](#)
April 22, 2021 [Water "On App"](#)
March 25, 2021 [Researchers are Close to Hooking Fatal Catfish Disease](#)
February 25, 2021 [From Problem to Solution: Recycling Manure To Help Crops](#)
January 19, 2021 [Researchers Plan To Use Satellites To Improve Sustainability, Yield](#)

October 28, 2021 [Growing Plants in Space](#)
September 23, 2021 [Healthy Soils – Healthy Food – Healthy People](#)
August 17, 2021 [Vertical Farming – No Longer A Futuristic Concept](#)
July 20, 2021 [Improving Rangeland Resilience in the Southwest Climate Hub](#)
June 15, 2021 [Repurposing Ag-Waste to Create Bioplastics](#)
May 13, 2021 [Breeding Better Blueberries](#)
April 28, 2021 [Addressing Climate Change Through Data](#)
March 23, 2021 [The Nuts and Bolts of Peanut Breeding](#)
February 23, 2021 [Getting More Uses Out of The Vitamin-Packed Sweetpotato](#)

<https://www.ars.usda.gov/oc/dof/archive/>

ECONOMIC RESEARCH SERVICE

Home Topics ▾ Data Products ▾ Publications ▾ Newsroom ▾ Calendar ▾ Amber Waves Magazine ▾

Home > Publications

Publications

Showing Results for OCE: USDA Agricultural Projections

Sort by: Title | Date ▲

USDA Agricultural Projections to 2030

OCE-2021-1, February 16, 2021

USDA's domestic 10-year projections for the food and agriculture sector cover major agricultural commodities, agricultural trade, and aggregate indicators of the U.S. farm sector--such as farm income.

USDA Agricultural Projections to 2029

OCE-2020-1, February 14, 2020

USDA's 10-year projections for the food and agriculture sector cover major agricultural commodities, agricultural trade, and aggregate indicators of the U.S. farm sector, such as farm income.

USDA Agricultural Projections to 2028

OCE-2019-1, March 13, 2019

USDA's 10-year projections for the food and agriculture sector cover major agricultural commodities, agricultural trade, and aggregate indicators of the U.S. farm sector, such as farm income.

REFINE YOUR RESULTS

By Topic ▾

By Sub Topic ▾

USDA Agricultural Projections ▾

By Author ▾

Reset

Fruit and Tree Nuts Outlook: September 2021

Jaclyn Kramer, coordinator
Skyler Simnitt and Linda Calvin

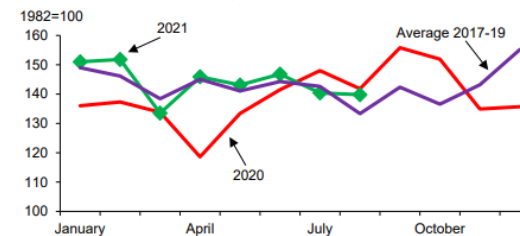
In this report:

[Price Outlook](#)
[Noncitrus Fruit Outlook](#)
[Citrus Fruit Outlook](#)
[Tree Nuts Outlook](#)
[Commodity Highlight: Almonds](#)
[Special Article: Fresh Fruit Availability Expands](#)

U.S. Production of Major Noncitrus Fruit Forecast to Rise in 2021

The 2021/22 marketing year is underway for many noncitrus fruit crops. USDA's National Agricultural Statistics Service (NASS) forecast 2021 apple, grape, peach, cranberry, and sweet and tart cherry production up but forecast pear production down. For many crops, the impact of record high heat in some areas and California's on-going drought is uncertain. Producer prices fluctuated throughout 2021 but are generally slightly above 2017–19 levels. The 2020/21 U.S. citrus season finished with declines in all citrus commodities except California tangerines, likely contributing to higher citrus prices for the season. U.S. tree nut supplies in 2021/22 are forecast down from last year's record. Smaller crops of almonds and walnuts due to severe weather and drought conditions are likely to increase grower prices for these crops.

Index for prices received by producers for fresh fruit

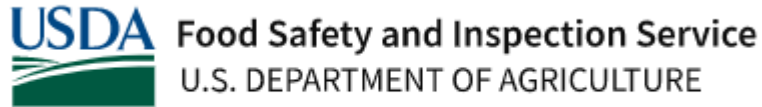


Source: U.S. Department of Labor, Bureau of Labor Statistics.

<https://www.ers.usda.gov/publications/#!topicid=&subtopicid=&series=OCE&authorid=&page=1&sortfield=date&sortascending=false>

DEPARTMENTS WITHIN THE DEPARTMENT OF AGRICULTURE

- **Farm Service Agency (FSA)**
 - The Farm Service Agency implements agricultural policy, administers credit and loan programs, and manages conservation, commodity, disaster and farm marketing programs through a national network of offices.
- **Food and Nutrition Service (FNS)**
 - FNS increases food security and reduces hunger in partnership with cooperating organizations by providing children and low-income people access to food, a healthy diet, and nutrition education in a manner that supports American agriculture and inspires public confidence.
- **Food Safety and Inspection Service (FSIS)**
 - FSIS enhances public health and well-being by protecting the public from foodborne illness and ensuring that the nation's meat, poultry and egg products are safe, wholesome, and correctly packaged.
- **Foreign Agricultural Service (FAS)**
 - FAS works to improve foreign market access for U.S. products. This USDA agency operates programs designed to build new markets and improve the competitive position of U.S. agriculture in the global marketplace.



<https://www.fsis.usda.gov/inspection/establishments/meat-poultry-and-egg-product-inspection-directory>

Inspection ^

Inspection Programs v

Compliance Guidance v

Import & Export v

Regulatory Enforcement v

Inspection Training & Videos v

Apply for Grant of Inspection v

Establishments ^

FSIS Inspected Establishments

Meat, Poultry and Egg Product Inspection Directory

Inspection Forms

Subscribe for Updates ↗

Meat, Poultry and Egg Product Inspection Directory

The Meat, Poultry and Egg Product Inspection (MPI) Directory is a listing of establishments that produce meat, poultry, and/or egg products regulated by FSIS. The Establishment Demographic Data includes additional establishment information about FSIS regulated establishments, including size, species slaughtered and aggregate categorical production information. This below visualization combines these data sets to allow users to view establishments geographically and filter by location, species slaughtered and categorical production activities. These data are updated weekly, and the current edition replaces all previous editions.

NOTE: Data is accurate as of the date the report was generated. Changes that have occurred or have been processed after the date of this report will appear in the next weekly update.

- If you believe that the current directory contains an error, or you have any technical questions relating to meat, poultry or egg products, please contact the [FSIS Inspector-in-Charge](#) assigned to the establishment.
- If you have any technical questions related to meat, poultry or egg products, please use [askFSIS](#).
- If you need additional information about establishments, you may file a request under the [Freedom of Information Act](#) (FOIA).
- See also the establishments listing in table format: [FSIS Inspected Establishments](#)

Downloadable Data Files and References



DEPARTMENTS WITHIN THE DEPARTMENT OF AGRICULTURE

- **Forest Service (FS)**
 - FS sustains the health, diversity and productivity of the Nation's forests and grasslands to meet the needs of present and future generations.
- **FPAC Business Center**
 - The FPAC Business Center is a first-of-its-kind organization at USDA, combining the talent of employees from all three FPAC agencies into specialized teams that serve employees and customers across the Farm Service Agency (FSA), the Natural Resource Conservation Service (NRCS) and the Risk Management Agency (RMA).
- **National Agricultural Statistics Service (NASS)**
 - NASS serves the basic agricultural and rural data needs of the country by providing objective, important and accurate statistical information and services to farmers, ranchers, agribusinesses and public officials. This data is vital to monitoring the ever-changing agricultural sector and carrying out farm policy.

Today's Reports [View previous reports](#)

Nov 11, 2021
There are no NASS reports scheduled for release today. Previous reports are available from our [Publication section](#).



The 2022 Agricultural Statistics Board calendar is now available!

DATAACCESS: We are updating our systems and plan to avoid interruptions. However, NASS data and reports are available in multiple ways in addition to this website - Cornell University Mann Library (a USDA repository) [website and e-mail report subscription service](#); QuickStats [database](#) and [API](#); and a [JSON file](#) for principal economic indicator data.

Headlines

- 11/08/21 [NEWS RELEASE: Producers still have time to respond to USDA hemp survey.](#)
- 10/28/21 [NEWS RELEASE: CroplandCROS web app updates existing geospatial data product for agricultural commodities in the United States](#)
- 10/15/21 [ASB NOTICE: USDA NASS to collect additional information on 2020 Local Foods Marketing Practices Survey.](#)
- 10/13/21 [NEWS RELEASE: USDA NASS conducts its first Hemp Acreage and Production Survey.](#)
- 10/12/21 [NEWS RELEASE: US corn and soybean production up from September](#)

Find Data and Reports by:



[Find a Regional or State Field Office](#)



COMPLETE YOUR SURVEY ONLINE

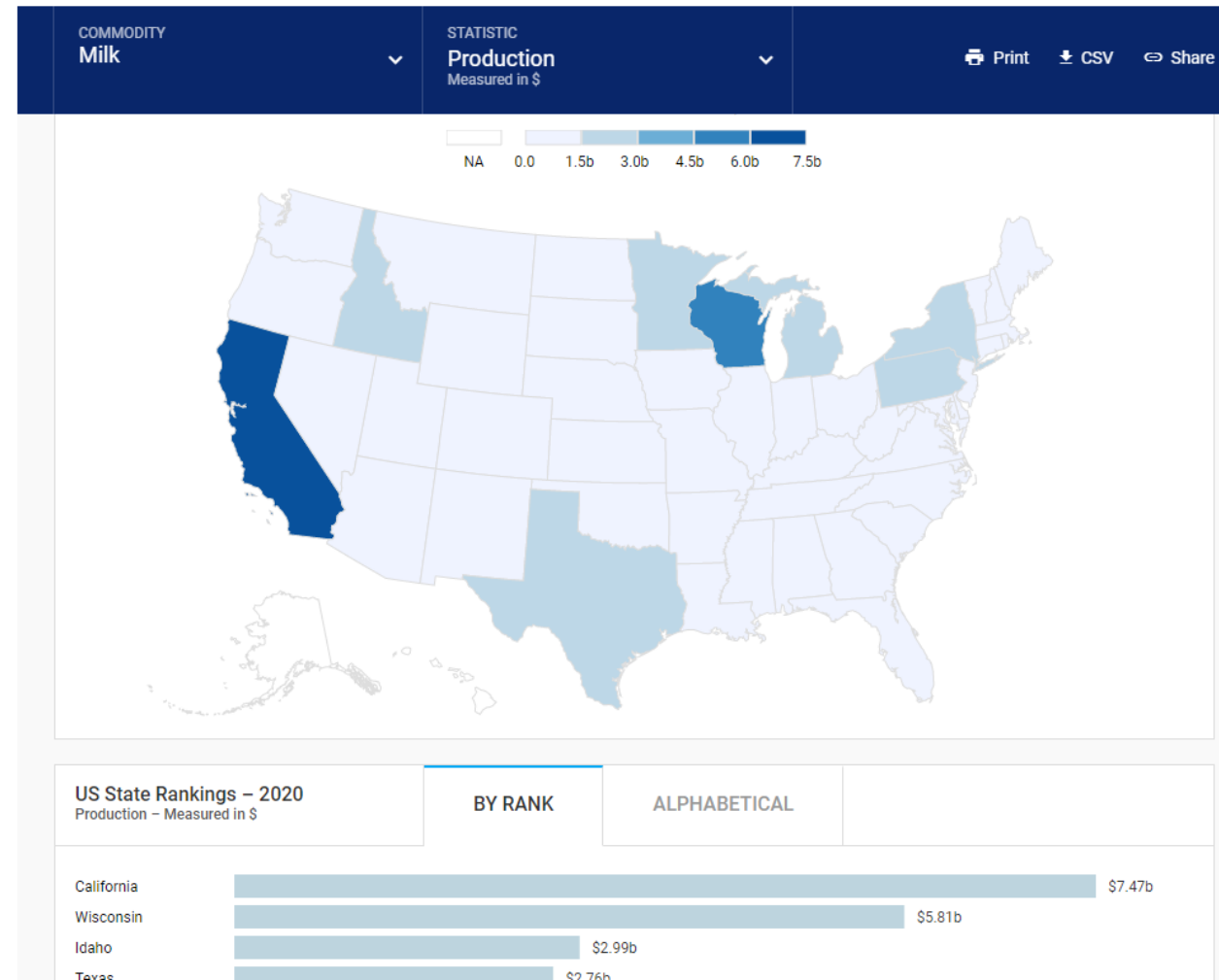
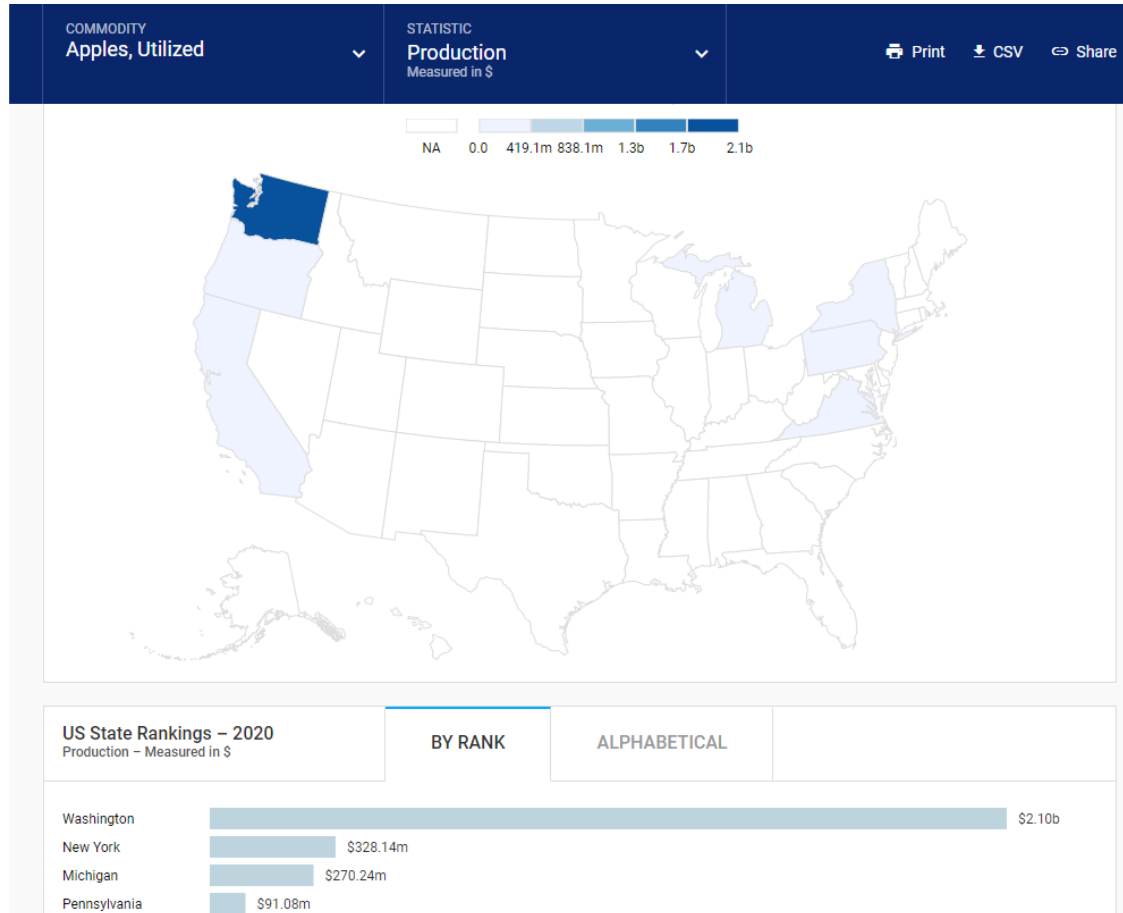


DATA VISUALIZATION

~ Providing Timely, Accurate and Useful Statistics in Service to U.S. Agriculture ~

DATA VISUALIZATIONS

https://www.nass.usda.gov/Data_Visualization/Commodity/index.php



Quick Stats

Navigation History: Locale->Year->State->Zip Code->Frequency

Select Commodity (one or more) [?](#)

Program: CENSUS	Sector: ANIMALS & PRODUCTS CROPS DEMOGRAPHICS ECONOMICS	Group: ANIMAL TOTALS CROP TOTALS DAIRY FARMS & LAND & ASSETS FIELD CROPS FRUIT & TREE NUTS HORTICULTURE INCOME LIVESTOCK	Commodity: AG LAND ANIMAL TOTALS BERRY TOTALS CATTLE CCC LOANS CHICKENS COMMODITY TOTALS CORN CROP TOTALS
---------------------------	--	--	---

Select Location (one or more) [?](#)

Geographic Level: AGRICULTURAL DISTRICT AMERICAN INDIAN RESERVATION COUNTY NATIONAL PUERTO RICO & OUTLYING AREAS REGION : MULTI-STATE REGION : SUB-STATE STATE WATERSHED	State: NORTH DAKOTA OHIO OKLAHOMA OREGON PENNSYLVANIA RHODE ISLAND SOUTH CAROLINA SOUTH DAKOTA TENNESSEE	Zip Code: 37088 37090 37091 37095 37096 37097 37098 37101 37110
--	--	---

Select Time (one or more) [?](#)

Year: 2017 2007	Period Type: ANNUAL	Period: YEAR
------------------------------	-------------------------------	------------------------

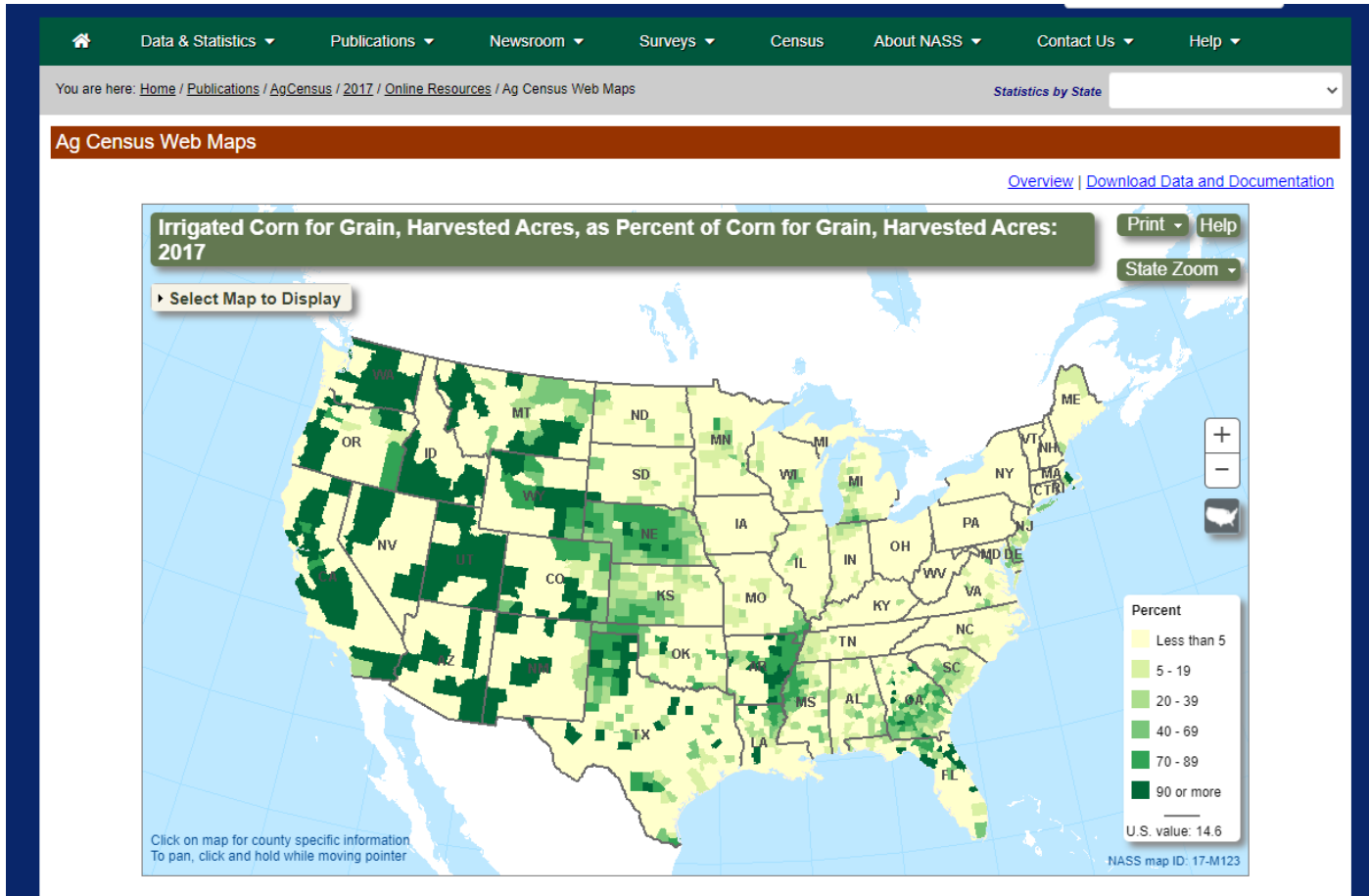
NASS RESOURCES

Online Resources

Category	Release Date
<p>Census Data Query Tool Use this application to query 2017 Census of Agriculture data. Data are searchable by census table and are downloadable as PDF files. Click here to download the complete 2017 CDQT data set.</p>	Apr 11, 2019
<p>Quick Stats 2.0 Query the 2017 Census of Agriculture database to retrieve customized tables with Census data at the national, state, and county levels.</p>	Apr 11, 2019
<p>Agricultural Atlas View profiles of the nation's agriculture at the county-level in a series of multicolor pattern and dot maps.</p>	Apr 11, 2019
<p>Ag Census Web Maps Use this online application to access key Census data through a collection of interactive maps.</p>	Sep 30, 2019
<p>Ag Census Highlights A series of topical fact sheets about the characteristics, conditions and trends among U.S. farms and farmers.</p>	Apr 11, 2019 (and on)
<p>Zip Code Tabulations Explore 2017 Census of Agriculture counts of farm characteristics by five-digit postal ZIP Code using our Quick Stats database. Select a State to see available ZIP Codes to choose and then hit the 'Get Data' button to see counts. Click here to view the methodology describing this tabulation.</p>	Sep 18, 2019

https://www.nass.usda.gov/Publications/AgCensus/2017/index.php#full_report

AG CENSUS RESOURCES



<https://www.nass.usda.gov/Publications/AgCensus/2017/OnlineResources/AgCensusWebMaps/index.php>

2017 CENSUS OF AGRICULTURE

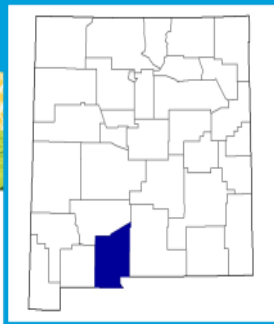
Specialty Crops

Volume 2 • Subject Series • Part 8

AC-17-S-8

Issued December 2019

United States Department of Agriculture



Dona Ana County New Mexico

Total and Per Farm Overview, 2017 and change since 2012

	2017	% change since 2012
Number of farms	1,946	-11
Land in farms (acres)	528,270	-20
Average size of farm (acres)	271	-10

Total	(\$)	% change since 2012
Market value of products sold	370,292,000	+5
Government payments	578,000	-60
Farm-related income	8,229,000	+48
Total farm production expenses	298,024,000	-9
Net cash farm income	81,075,000	+180

Per farm average	(\$)	% change since 2012
Market value of products sold	190,284	+18
Government payments (average per farm receiving)	7,411	+6
Farm-related income	21,320	+48
Total farm production expenses	153,147	+2
Net cash farm income	41,662	+215

14 Percent of state agriculture sales

Share of Sales by Type (%)

Crops	62
Livestock, poultry, and products	38

Land in Farms by Use (%) ^a

Cropland	18
Pastureland	81
Woodland	(Z)
Other	1

Acres irrigated: 73,673

14% of land in farms

Land Use Practices (% of farms)

No till	2
Reduced till	3
Intensive till	7
Cover crop	5

Farms by Value of Sales

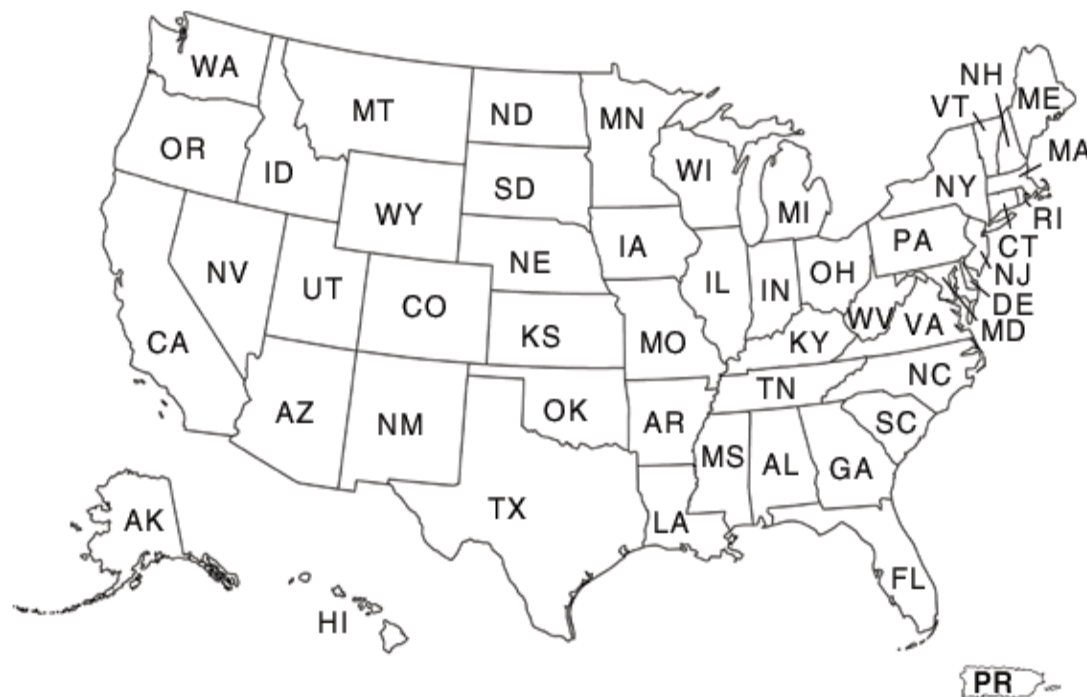
Farms by Size

https://www.nass.usda.gov/Publications/AgCensus/2017/Full_Report/Census_by_State/index.php

Census of Agriculture

2017 Census by State

Select the State from the map or from the text below the map.



[Alabama](#)

[Alaska](#)

[Arizona](#)

[Arkansas](#)

[California](#)

[Colorado](#)

[Connecticut](#)

[Delaware](#)

[Florida](#)

[Georgia](#)

[Indiana](#)

[Iowa](#)

[Kansas](#)

[Kentucky](#)

[Louisiana](#)

[Maine](#)

[Maryland](#)

[Massachusetts](#)

[Michigan](#)

[Minnesota](#)

[Nebraska](#)

[Nevada](#)

[New Hampshire](#)

[New Jersey](#)

[New Mexico](#)

[New York](#)

[North Carolina](#)

[North Dakota](#)

[Ohio](#)

[Oklahoma](#)

[Rhode Island](#)

[South Carolina](#)

[South Dakota](#)

[Tennessee](#)

[Texas](#)

[Utah](#)

[Vermont](#)

[Virginia](#)

[Washington](#)

[West Virginia](#)



Update Grid

Census Chapter

1 - U.S./State Level Data

Census Table

1 - Historical Highlights

State

US TOTAL

County

Choose a County

Filter by Commodity

2017

FARM OPERATIONS - NUMBER OF OPERATIONS

2,042,220

AREA OPERATED: (1.0 TO 9.9 ACRES)

273,325

AREA OPERATED: (10.0 TO 49.9 ACRES)

583,001

AREA OPERATED: (50 TO 179 ACRES)

564,763

AREA OPERATED: (180 TO 499 ACRES)

315,017

AREA OPERATED: (500 TO 999 ACRES)

133,321

AREA OPERATED: (1,000 TO 1,999 ACRES)

87,666

AREA OPERATED: (2,000 OR MORE ACRES)

85,127

https://www.nass.usda.gov/Quick_Stats/CDQT/chapter/1/table/1

FARM OPERATIONS - ACRES OPERATED

900,217,576

FARM OPERATIONS - AREA OPERATED, MEASURED IN ACRES / OPERATION

441

AG LAND, INCL BUILDINGS - ASSET VALUE, MEASURED IN \$ / OPERATION

1,311,808

AG LAND, INCL BUILDINGS - ASSET VALUE, MEASURED IN \$ / ACRE

2,976

MACHINERY TOTALS - ASSET VALUE, MEASURED IN \$

272,297,744,000

MACHINERY TOTALS - ASSET VALUE, MEASURED IN \$ / OPERATION

133,363

AG LAND, CROPLAND - NUMBER OF OPERATIONS

1,475,627

AG LAND, CROPLAND - ACRES

396,433,817

AG LAND, CROPLAND, HARVESTED - NUMBER OF OPERATIONS

1,245,548

AG LAND, CROPLAND, HARVESTED - ACRES

320,041,858

AG LAND, IRRIGATED - NUMBER OF OPERATIONS

294,235

AG LAND, IRRIGATED - ACRES

58,013,907

COMMODITY TOTALS - SALES, MEASURED IN \$

388,522,695,000

COMMODITY TOTALS - SALES, MEASURED IN \$ / OPERATION

190,245

DEPARTMENTS WITHIN THE DEPARTMENT OF AGRICULTURE

- **National Institute of Food and Agriculture (NIFA)**
 - NIFA's mission is to invest in and advance agricultural research, education, and extension to solve societal challenges. NIFA's investments in transformative science directly support the long-term prosperity and global preeminence of U.S. agriculture.
- **Natural Resources Conservation Service (NRCS)**
 - NRCS provides leadership in a partnership effort to help people conserve, maintain and improve our natural resources and environment.
- **Risk Management Agency (RMA)**
 - RMA helps to ensure that farmers have the financial tools necessary to manage their agricultural risks. RMA provides coverage through the Federal Crop Insurance Corporation, which promotes national welfare by improving the economic stability of agriculture.

DEPARTMENTS WITHIN THE DEPARTMENT OF AGRICULTURE

- **Rural Development (RD)**

- RD helps rural areas to develop and grow by offering Federal assistance that improves quality of life. RD targets communities in need and then empowers them with financial and technical resources.

- **Rural Utilities Service (RUS)**

- RUS provides financing to build or improve infrastructure in rural communities. This includes water and waste treatment, electric power and telecommunications services. These services help expand economic opportunities and improve the quality of life for rural residents.

DEPARTMENTS WITHIN THE DEPARTMENT OF AGRICULTURE

- **Rural Housing Service (RHS)**

- RHS offers a variety of programs to build or improve housing and essential community facilities in rural areas. RHS offers loans, grants and loan guarantees for single- and multi-family housing, child care centers, fire and police stations, hospitals, libraries, nursing homes, schools, first responder vehicles and equipment, housing for farm laborers and much more.

- **Rural Business-Cooperative Service (RBS)**

- RBS offers programs to help businesses grow as well as job training for people living in rural areas. These programs help provide the capital, training, education and entrepreneurial skills that can help people living in rural areas start and grow businesses or find jobs in agricultural markets and in the bio-based economy.



Find Your Local Service Center

i We are committed to delivering USDA services to America's farmers and ranchers while taking safety measures in response to the pandemic. Some USDA offices are beginning to reopen to limited visitors by appointment only. Service Center staff also continue to work with agricultural producers via phone, email, and other digital tools. Learn more at farmers.gov/coronavirus.

USDA Service Centers are locations where you can connect with Farm Service Agency, Natural Resources Conservation Service, or Rural Development employees for your business needs. Enter your state and county below to find your local service center and agency offices. If this locator does not work in your browser, please visit offices.usda.gov

Visit the Risk Management Agency website to find a [regional or compliance office](#) or to find an [insurance agent](#) near you.

State

County

GO

<https://www.rd.usda.gov/about-rd/agencies/rural-housing-service>

Evaluation

- <https://www.surveymonkey.com/r/IDRCStaffTrainingEval21-22>
- Dept of Agriculture



Let us know your thoughts!

Contact Info

Jessica Castañeda

IDRC Director

931-668-4129- office

931-273-4050- cell

jcastanedaidr@gmail.com

www.idrconsortium.org



thank you